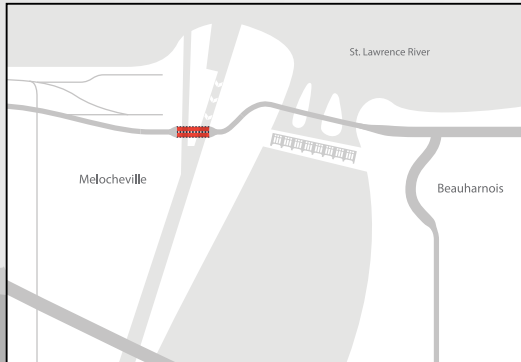


MELOCHEVILLE TUNNEL

Located next to the Beauharnois generating station, the Melocheville Tunnel is an extension of the regional route from Montreal's south-west shore. This tunnel is located directly under the Beauharnois Canal and allows for the ongoing passage of both road and maritime traffic.

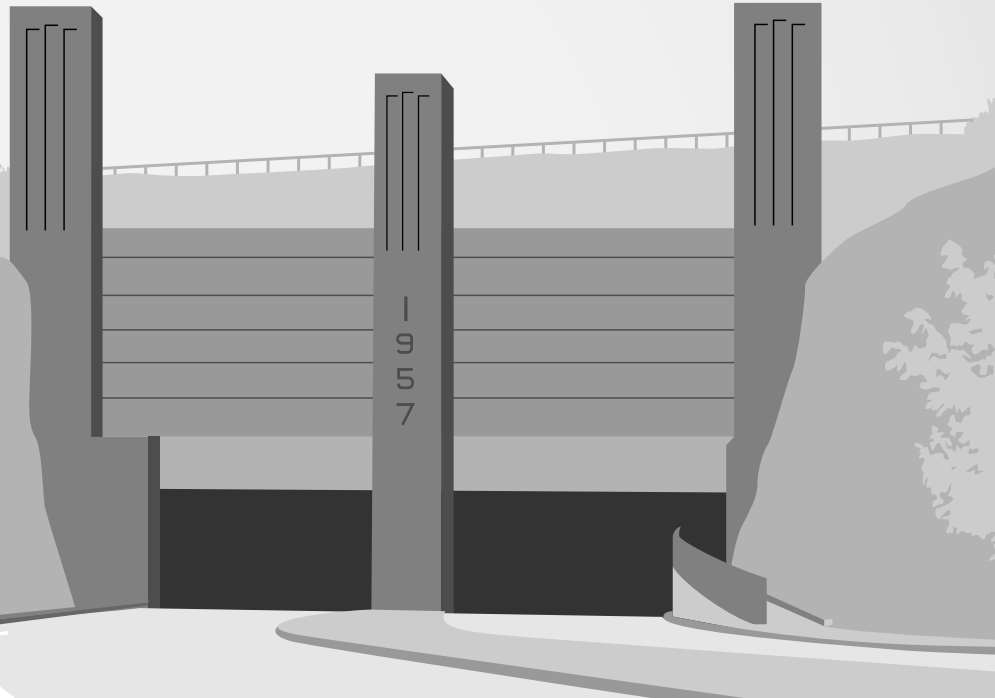


Ponts
JACQUES CARTIER +
CHAMPLAIN
Bridges
Canada



LENGTH

Melocheville Tunnel: 227.6 m



TECHNICAL DATA

Total tunnel width: 28.5 m (including the exterior ventilation towers)
Sidewalk width: 1.7 m (downstream side)
Tunnel bending radius: 584.6 m
Degree of curve: 3
Number of caissons: 18
Outside caisson dimensions:
Length 12.2 m
Width 23.8 m

TRAFFIC

Two (2) traffic lanes
Speed limit: 50 km/h
Trucks: AUTHORIZED except dangerous substances
Oversized trucks: LICENSE REQUIRED ([more info](#))
Scooters: AUTHORIZED
Cyclists and pedestrians: AUTHORIZED on the sidewalk
Monitoring: Police de Châteauguay

TUNNEL DETAILS

- + The tunnel has a traffic lane in each direction, a sidewalk on the north side and three ventilation shafts; one air exhaust and two air intakes.
- + The two traffic lanes are separated by a central support structure that forms the first ventilation shaft (air exhaust).
- + The caissons lie directly on the bedrock.

