



Ponts
JACQUES CARTIER +
CHAMPLAIN
Bridges
Canada

Deconstruction of the original Champlain Bridge Update

June, 2 2021



Presenters

- **Moderator: Jacques Benard**
Senior Vice-President, Hill & Knowlton Strategies
- **Nathalie Lessard**
Director, Communications, JCCBI
- **Dominique Blouin**
Senior Director, Projects, JCCBI
- **Simon Hébert**
Assistant Project Director, Nouvel Horizon Saint-Laurent

Agenda

- + Deconstruction Project Update
- + Progress and Future Work
- + Other Aspects of the Project
- + To follow the Progress of the Project
- + Question Period



How can I ask a question ?

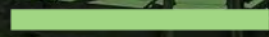
1. Click on the 'chat' icon with a question mark, at the top right of the screen
2. Type your question in the box at the bottom right of the screen
3. Click on Send





Project Overview Update

Dominique Blouin, Eng., Senior Director, Projects



Summary of the deconstruction project

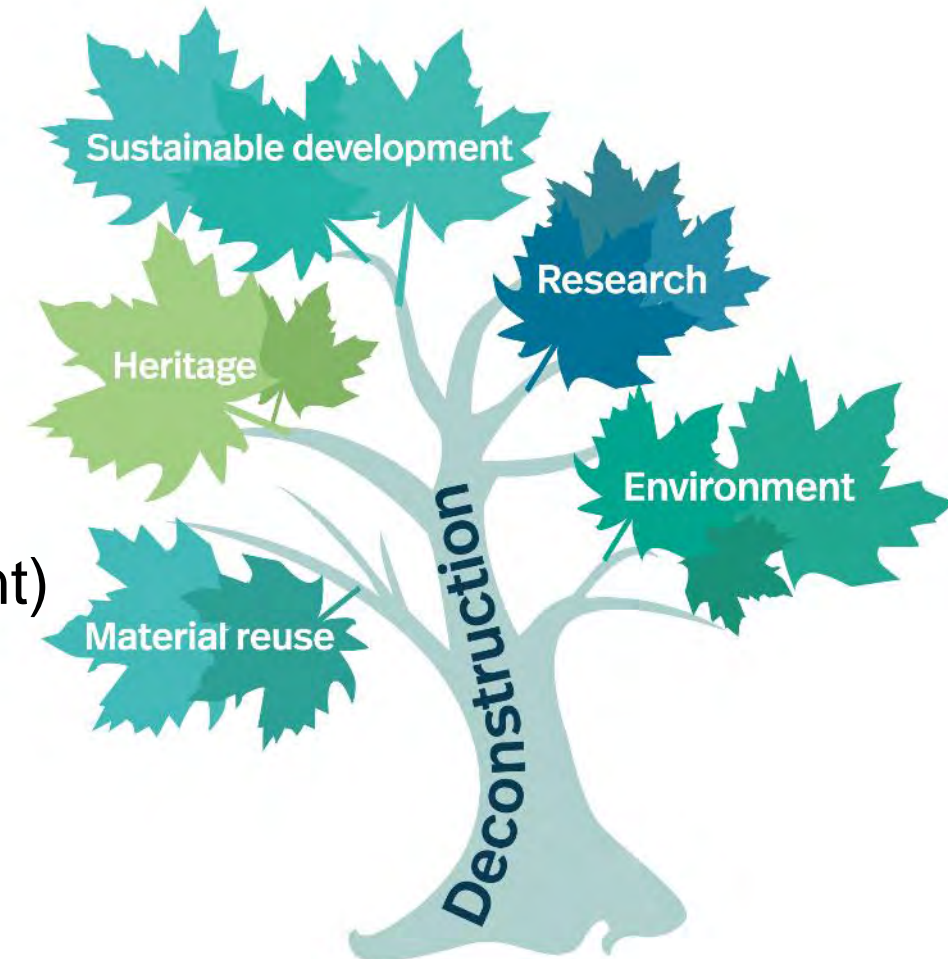


5 components:

1. Deconstruction work
2. Environmental measures
3. Material reuse
4. 11 research and development projects
5. Héritage Champlain (shoreline redevelopment)

Deconstruction duration: **43 months**

Scheduled end date: **January 2024**



43 months for the deconstruction

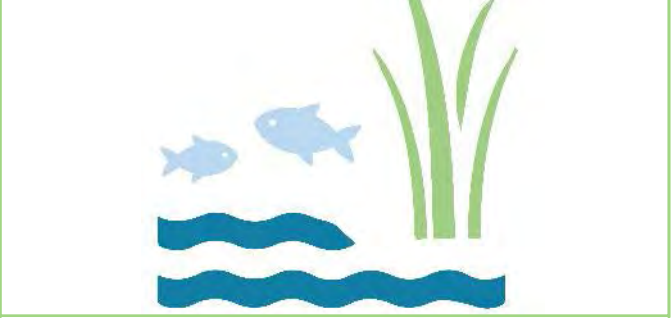


Section 5: St. Lawrence River | August 2020 – January 2024

Section 6: Seaway | April 2021 – January 2024

Section 7: Brossard | May 2022 – January 2024

Shoreline Redevelopment:
2024-2025



2020			2021			2022			2023			2024			2025
JL-SE	OC-DE	JA-MR	AL-JN	JL-SE	OC-DE	JA-MR	AL-JN	JL-SE	OC-DE	JA-MR	AL-JN	JL-SE	OC-DE	JA-MR	JA-MR



Progress and Future Work

Simon Hébert, Assistant Project Director NHSL



Deconstruction: Île des Sœurs sector



- + **Bridge abutment and 9 spans** deconstructed over Île des Sœurs and the jetty
- + Construction of the **IDS jetty completed**
- + Construction of two **fish migration corridors** (in the IDS jetty)
- + Approximately **100 items** for reuse and for the R&D projects were removed



The construction site in pictures



Sept. 7, 2020

**René-Lévesque Blvd.
(IDS)**



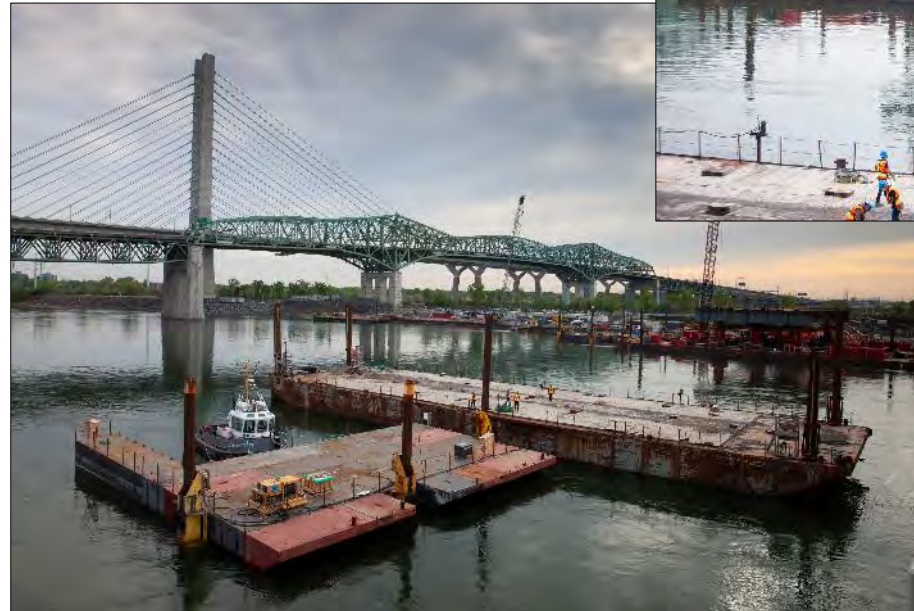
April 26, 2021

Ongoing work



Removal of permanent reinforcements (modular trusses) under the edge girders

Start-up of marine equipment: cranes, catamaran barges, tugs, lifting equipment



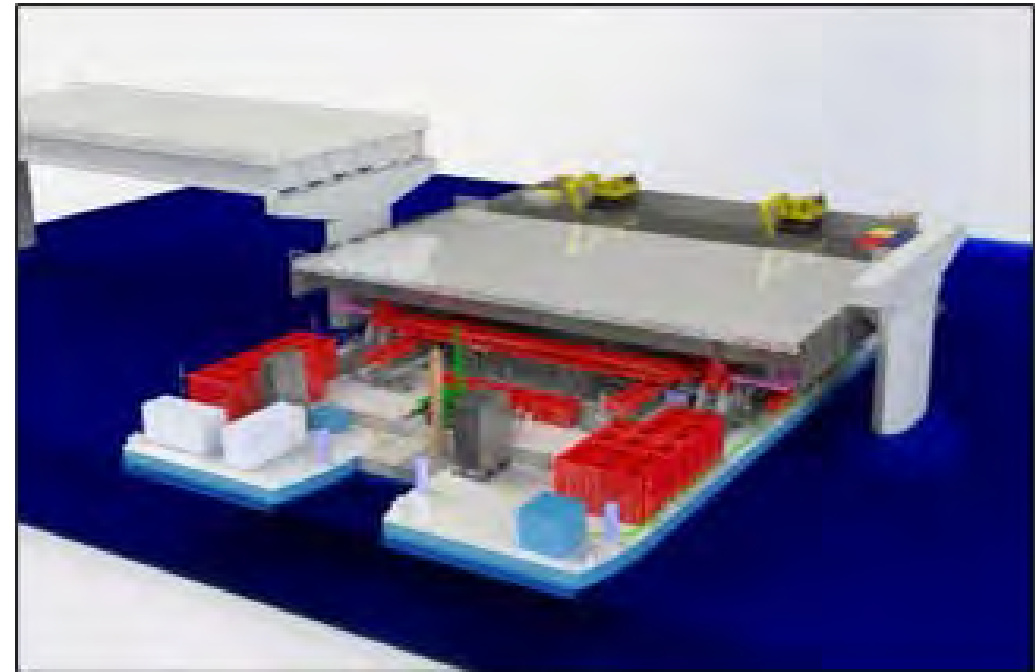
Deconstruction over the river



65% of the project: Away from residences

Method: System of platforms attached to lifting towers installed on a catamaran barge

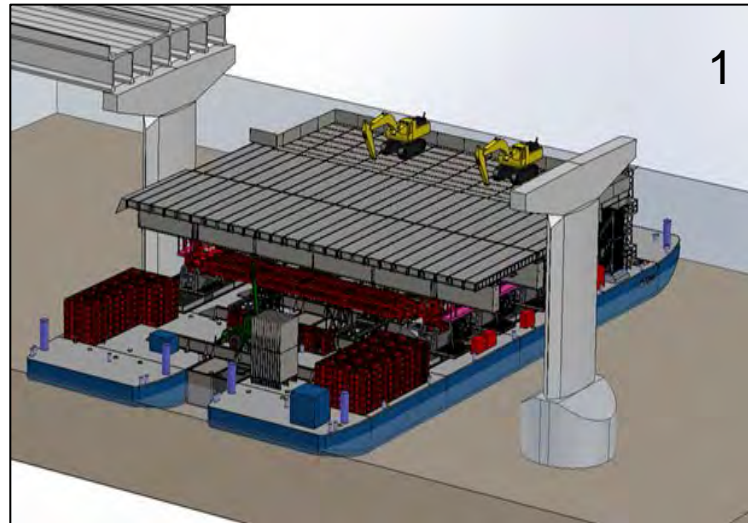
1. Preparatory work – dismantling and removal of:
 - Signage, street lights, etc.
 - R&D components
 - Permanent reinforcements
2. Span recovered with the platform system and deconstructed of span on the barge
3. Barge-based mechanical deconstruction of the piers and footings above and below the water level
4. Debris disposal by barge



Upcoming work



1. Deconstruction of spans over the river: mid-June 2021
2. Preparatory work to take down span over the Seaway: Summer 2021
3. Construction of the dike jetty: July 2021



Some work periods extended



Marine work: Dismantling of the spans

- + Work to take down a span cannot be interrupted
- + Duration: minimum of 12 consecutive hours
- + Complex and weather-sensitive work
- + Evening, night or weekend extensions to be expected: a few times a month

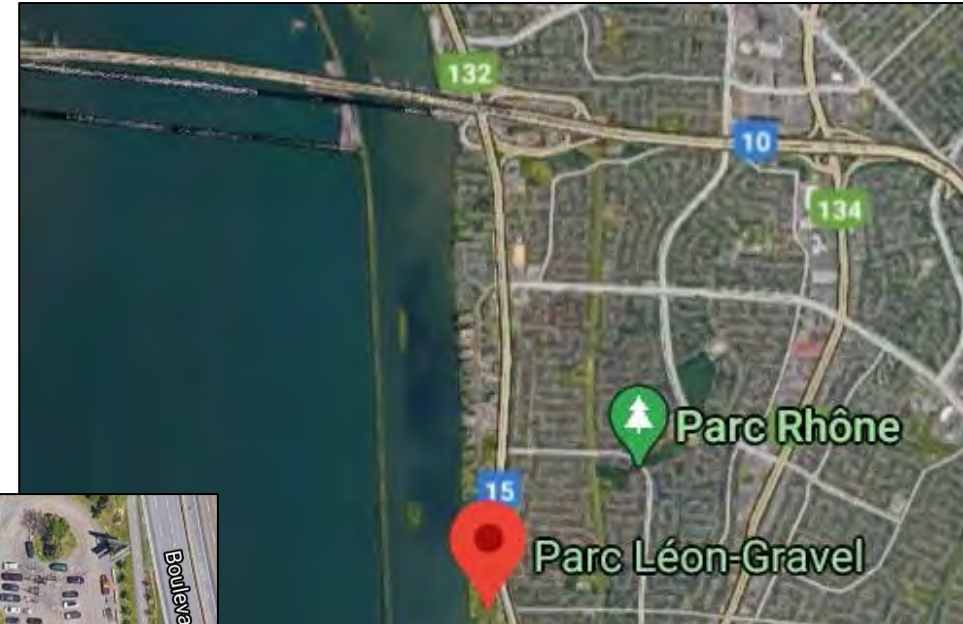


Characterization at Léon-Gravel Park



Possible temporary use in winter 2022

- + Environmental characterization: from May to August 2021
- + Geotechnical characterization (completed)
- + The dock and its surroundings are not affected by the current work





Marine work zone between Île des Sœurs and the St. Lawrence Seaway dike

- + **CAUTION:** the boating area under the original Champlain Bridge is considered a marine work zone.
- + Rules to follow:
 - Observe the buoys and beacons and follow the signs.
 - Stay away from the jetties, barges and any marine equipment.
 - Slow down.
 - Do not stop in the work zone.
- + Lesser La Prairie Basin (2021 boating season): no marine work on this section of the river.



Air quality



Data released once a month

- + The work may affect air quality by generating airborne particulates from various sources
- + Two types of monitoring are performed:
 - real-time monitoring at the edge of the site
 - ongoing air-quality monitoring from fixed stations in communities
- + This monitoring is done at fixed stations set up in residential areas

April 2021

Sites	# of samples	# over-limit measurements
IDS	208	1*
Brossard West	42	0
Brossard North	91	0

* As soon as an over-limit measurement was recorded on the work site, corrective actions were put in place : thus no over-limit measurement at IDS station (the closest one)



Sound levels



Noise management plan

- + The following limits must not be exceeded:
 - + Between 7:00 a.m. and 7:00 p.m.: Limit of 75 dBA for ambient noise
 - + Between 7:00 p.m. and 7:00 a.m.: Noise level must not exceed the reference level* by more than 5 dBA
 - + More detailed information in JCCBI's website
- + Sound level measurements are taken during work with a potential to generate louder noise

April



Sites	# of 30-minute measurements	# over-limit measurements
I1-01	96	0
I2-02	96	0

*The reference level is the ambient noise level measured in sensitive areas before the start of the work. This level varies from 51 to 67 dBA, depending on the area.

Bicycle Paths



Seaway Dike

- + Path open
- + A secure corridor for safe passage will be set up during the summer
- + Occasional short-term stops during critical operations



La Riveraine Bicycle Path

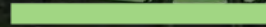
- + Path open
- + No major work between now and winter 2021-2022





Other Aspects of the Deconstruction Project

Dominique Blouin, Eng., Senior Director, Projects



Measures in place



- + JCCBI made sure that various measures were implemented on the work site to ensure tranquility in residential areas
- + Construction site supervision
- + Close coordination between JCCBI and NHSL
- + Quick reaction if an issue arises on site

Only 1 complaint since the beginning of the project in August 2020!



11 research and development projects



- + **7 Canadian research bodies**
- + Projects involving structural components from the bridge (concrete, steel and reinforcements)
- + Recovery of some bridge components for the program
- + R&D projects planned as per NHSL's schedule
- + Research project on the efficacy of fish migration corridors (INRS)



Environmental protection measures



- + **Fish habitat compensation** project: Redevelopment of a piece of farmland in Saint-Ignace-de-Loyola (Saint-Pierre Lake) into a floodplain
- + **Minimizing GHG emissions**: Use of recyclable materials located within a 150-km radius of the deconstruction site
- + Creation of **two fish migration corridors** in the IDS jetty
- + **Material traceability** program: Real-time tracking of materials, from the construction site to the taker's site

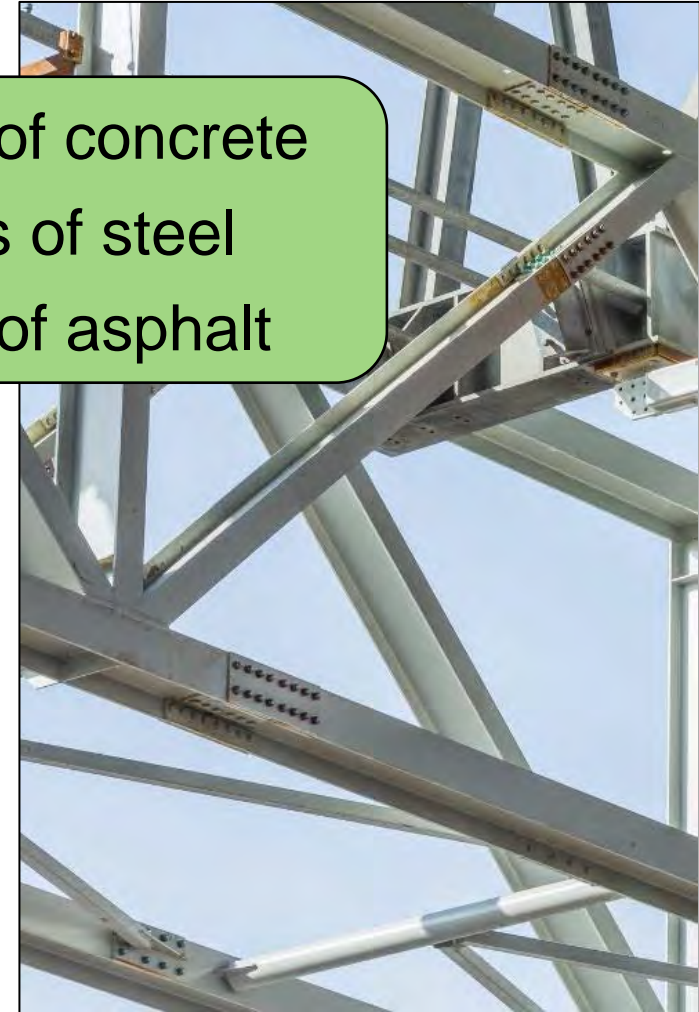


Material reuse



250,000 tonnes of concrete
25,000 tonnes of steel
12,000 tonnes of asphalt

- + Reuse of 400 steel components: online catalogue
- + Call for participation in progress: the competition submission form at deconstructionchamplain.ca
- + Personal, corporate or public projects: artistic, recreational, cultural, infrastructure or urban ecology projects



Shoreline redevelopment project (after the deconstruction)



- + Sector: **Estacade and three shoreline sites**
- + Preliminary studies and public consultations (information days, online consultations, co-creation workshops, design charrette)
- + Several scenarios are being studied to develop a “master concept”
- + **Upcoming consultations in 2022**



To follow the progress of the project

Nathalie Lessard, Director, Communications



Communication tools



Various platforms:

- + Website: champlaindeconstruction.ca
 - Details about all aspects of the project
 - Cameras with live images from the site
 - Work advisories



- + [Newsletter](#)
- + Public meetings with the residents of Brossard and IDS
- + Questions and complaints : communications@pjcci.ca
- + Social media



Work Monitoring Committee



- + **Goal:** Perform follow-up to ensure the local community can live peacefully with the Champlain Bridge deconstruction site
- + **Composition:**
 - + 6 citizens
 - + 1 municipal representative
 - + 2 JCCBI representatives
 - + 1 or 2 NHSL representatives
- + 3 or 4 meetings a year
- + **One committee for Brossard and one for Île des Sœurs**



Apply to sit on a Work Monitoring Committee



- + To submit your application, send an email to communications@pjcci.ca
- + Please send us the information below:
 - + Name
 - + Mailing address, email, phone number
 - + Why do you want to be on the committee?
 - + Commit to attend 3 to 4 virtual meetings a year: about 2 hours each, during weekday evenings





DÉCONSTRUCTION **PONT CHAMPLAIN** **CHAMPLAIN BRIDGE** DECONSTRUCTION

Participez à la conversation / Join the conversation

JacquesCartierChamplain.ca

